

DOCKYARD & ENGINEERING WORKS LIMITED

Your Oldest Trusted Shipbuilding Partner



Est 1926



An Enterprise of Bangladesh Navy





Est 1926

Your Oldest Trusted Shipbuilding Partner

Contents

Chapter	Description	Chapter	Description
1	Our Journey	5	Valued Customers
2	Our DNA	6	Yard's Facilities
3	Management	7	Our Products and Services
4	Accreditation	8	Our Achievements & Recognitions

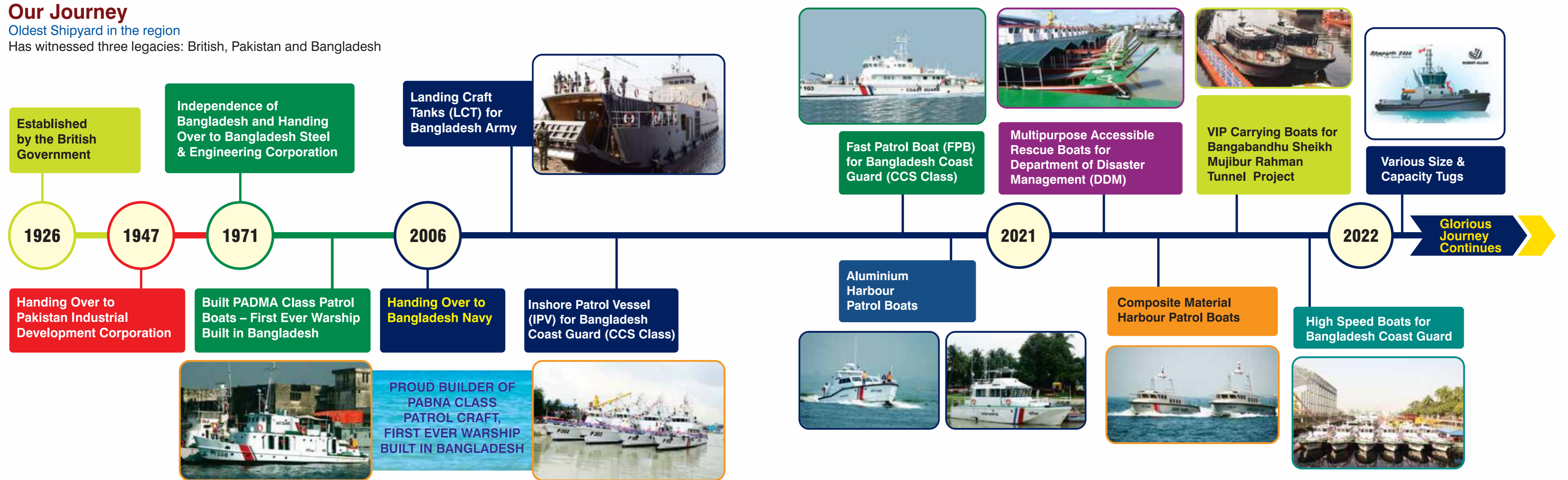
OUR JOURNEY



Our Journey

Oldest Shipyard in the region

Has witnessed three legacies: British, Pakistan and Bangladesh



OUR DNA





Vision

To be the leading shipbuilding industry in the region and trusted global partner in shipbuilding and engineering works



Mission

To support our valued customers in easy acquisition and efficient operation & management of maritime assets and to assist them to face future challenges in maritime sector:

Our 'Mission' is to provide all out support in shipbuilding, carrying out effective refit/ maintenance of vessels & equipment, fabrication of components of machinery and providing engineering solutions, strictly maintaining precision & high quality in workmanship and timely delivery to meet the expectations of the clients with utmost satisfaction.

Core Values



Why Choose DEW

- Possesses highest level experience in shipbuilding and ship repair
- ISO 9001:2015 certified shipbuilding industry
- In constant pursuit of excellence in quality and timely delivery of products
- Never compromises with quality
- Grandiose production space
- High-tech infrastructure facility
- Highly committed to customer's total satisfaction and reliable after sales service



Our Services

- Ship Building
- Ship Repairing
- Regenerating and Re-powering
- Engine and Machinery Overhauling
- All Types of Engineering Works
- Civil Construction Works



MANAGEMENT



Yard's Management

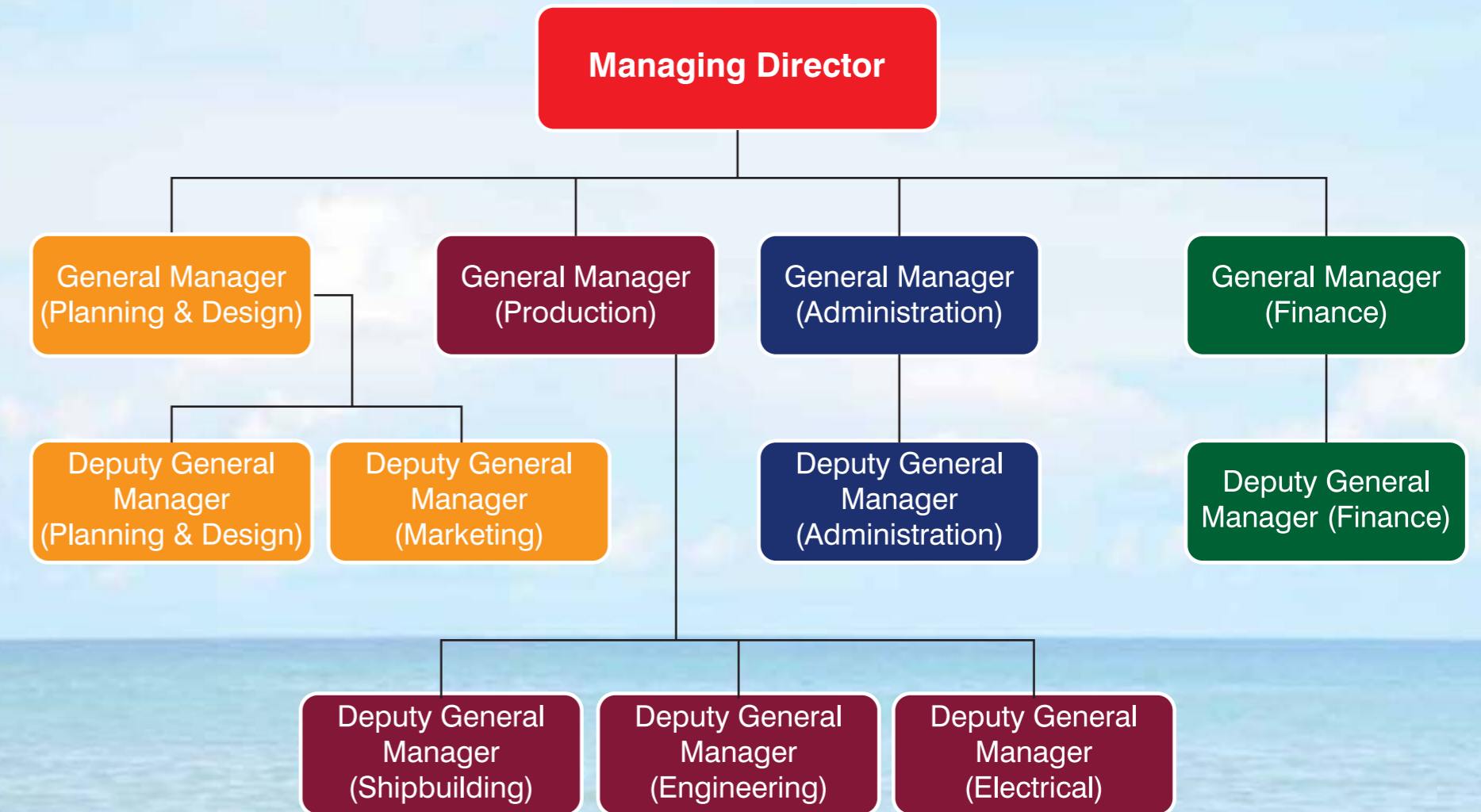
Dockyard and Engineering Works Ltd (DEW) is Managed by Board of Directors where Chief of Naval Staff is the Chairman of the Board. Managing Director being the Executive Head of the dockyard remains responsible to the Chairman to move forward dockyard effectively and efficiently. All Departments like Production, Planning and Design, Admin, and Finance are being led by concerned General Managers (GM). Deputy General Managers (DGM) are performing their duties as a part of mid-level management. All DGMs are accountable to General Managers and consequently General Managers are accountable to Managing Director.



Corporate Culture of DEW

DEW has a dedicated and highly qualified management body, which is involved in decision making, forecasting and planning. Managing Director organizes the shipyard, implements all business and production decisions by discussing with key personnel. The management practices democratic values in policy implementation system.

Organization



Quality Control (QC)

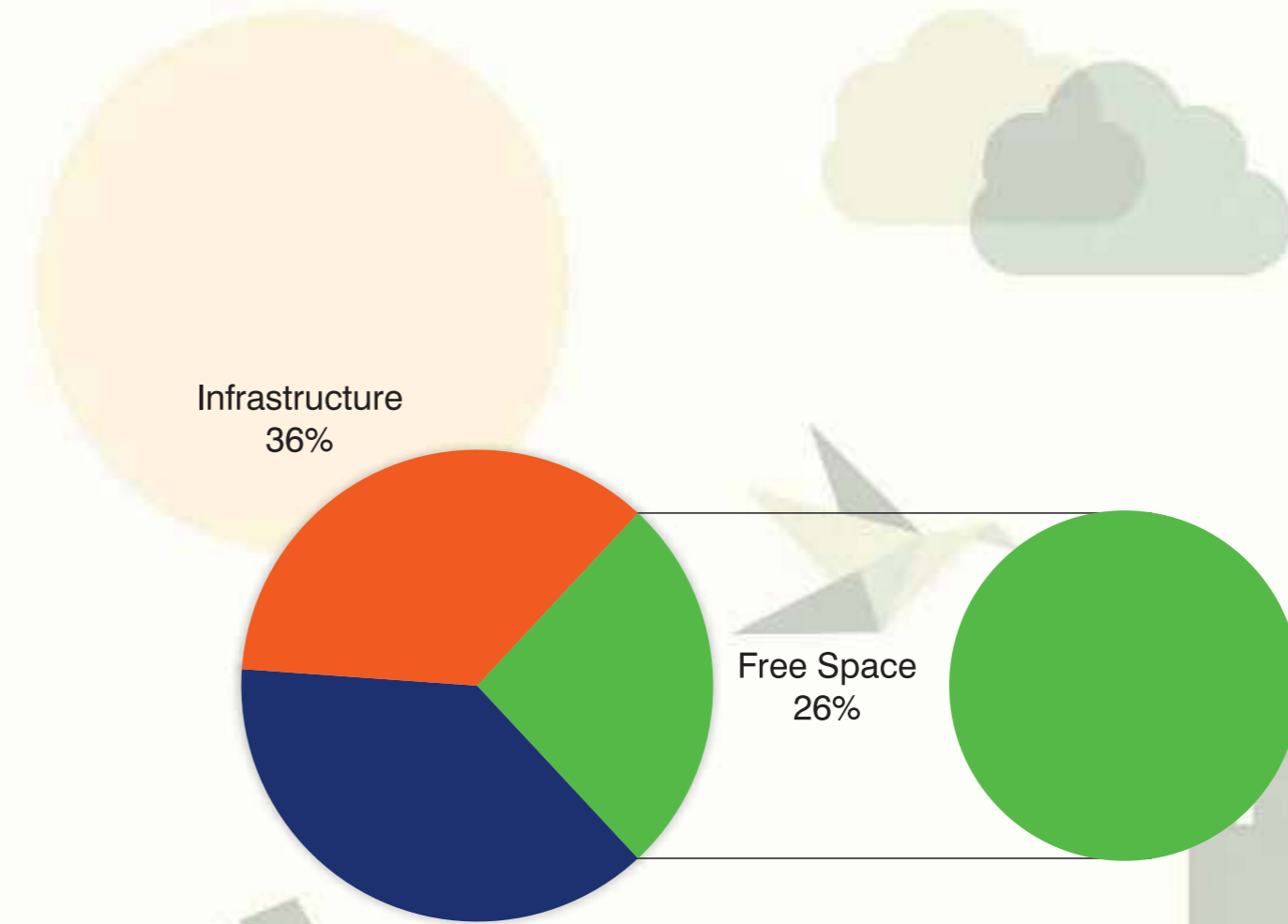
DEW has a dedicated QC team, consists of qualified Naval Architects, Mechanical Engineers, Electrical Engineers and specialized personnel to ensure the quality of purchased material and finished products of this organization. Total Quality Management (TQM) is the core of our management ethos. Customers feedback are highly appreciated, which helps in the process of improvement of products and services that we provide.



Safety and Security



Safety of employees and security of the yard gets the highest priority than any other aspects. This yard has own firefighting system equipped with state of the art extinguishers, fire hoses and fire hydrants. DEW has dedicated and well trained team of firefighters to deal any kind of fire hazard and natural disaster. Safety and hazard management instructions are being given periodically to ensure a safe and sound working environment.



Green Shipyard

DEW Ltd is extremely concerned about environment pollution issues. DEW is involved in maintaining high standard of cleaning and nature friendly activities for example, zero carbon emission into the atmosphere and water. A large number of trees are being planted every year to keep the environment safe.

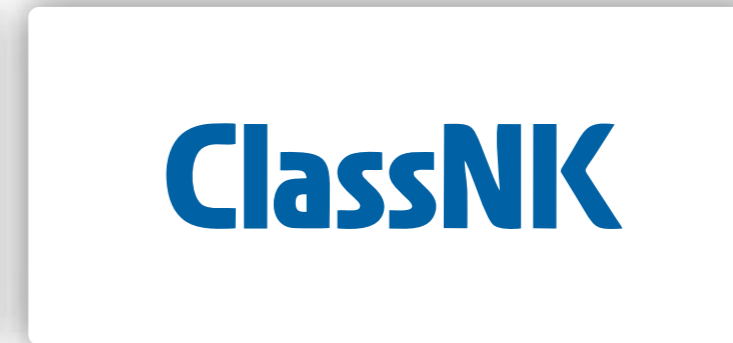
ACCREDITATION





ISO 9001:2015 Certified Shipyard

- Follows total Quality Management System (TQM):
- To maintain highest quality of product as per International Classification Societies
- To ensure timely delivery



Certificates & Licenses

1	Trade License for Civil work	Business Registration license
2	Trade License for Construction	
3	Trade License for Supply Work	
4	Income Tax Certificate	
5	VAT (New BIN) Registration Certificate	
6	TIN certificate	
7	NOC from Ministry of Shipping	
8	NOC from Mercantile Marine Office	
9	ISO Certificate (ISO 9001 : 2015)	International Certificate
10	Priority Certificate of the Ministry of Shipping	
11	Certificate of Incorporation	Limited Company Certificate
12	Company Share Certificate	
13	Slipway Certificate from (1500 Ton) BUET	Capacity Certificate
14	Fore Shore Certificate	Environmental Certificate
15	Environmental Certificate	
16	ICMAB Certificate	Best Corporate Award
17	Yard Certificate from Class Lloyds Register	International Work Standard Certificate
18	Yard Certificate from Class BV	
19	Yard Certificate from Class DNV	
20	Yard Certificate from Class RINA	
21	Yard Certificate from Class NKK	
22	Yard Certificate from Class CCS	

Certificates



OUR VALUED CUSTOMERS



Our Valued Customers

DEW has a long list of satisfied customers which includes both government and private organizations. We construct new ships & craft for them and provide all kinds of service support which include maintenance, conversion and engineering solutions.



Bangladesh Navy



Bangladesh Army



Bangladesh Coast Guard



Chittagong Port Authority



Mongla Port Authority



Payra Port Authority



Bangladesh Inland Water Transport Authority (BIWTA)



Bangladesh Inland Water Transport Corporation (BIWTC)

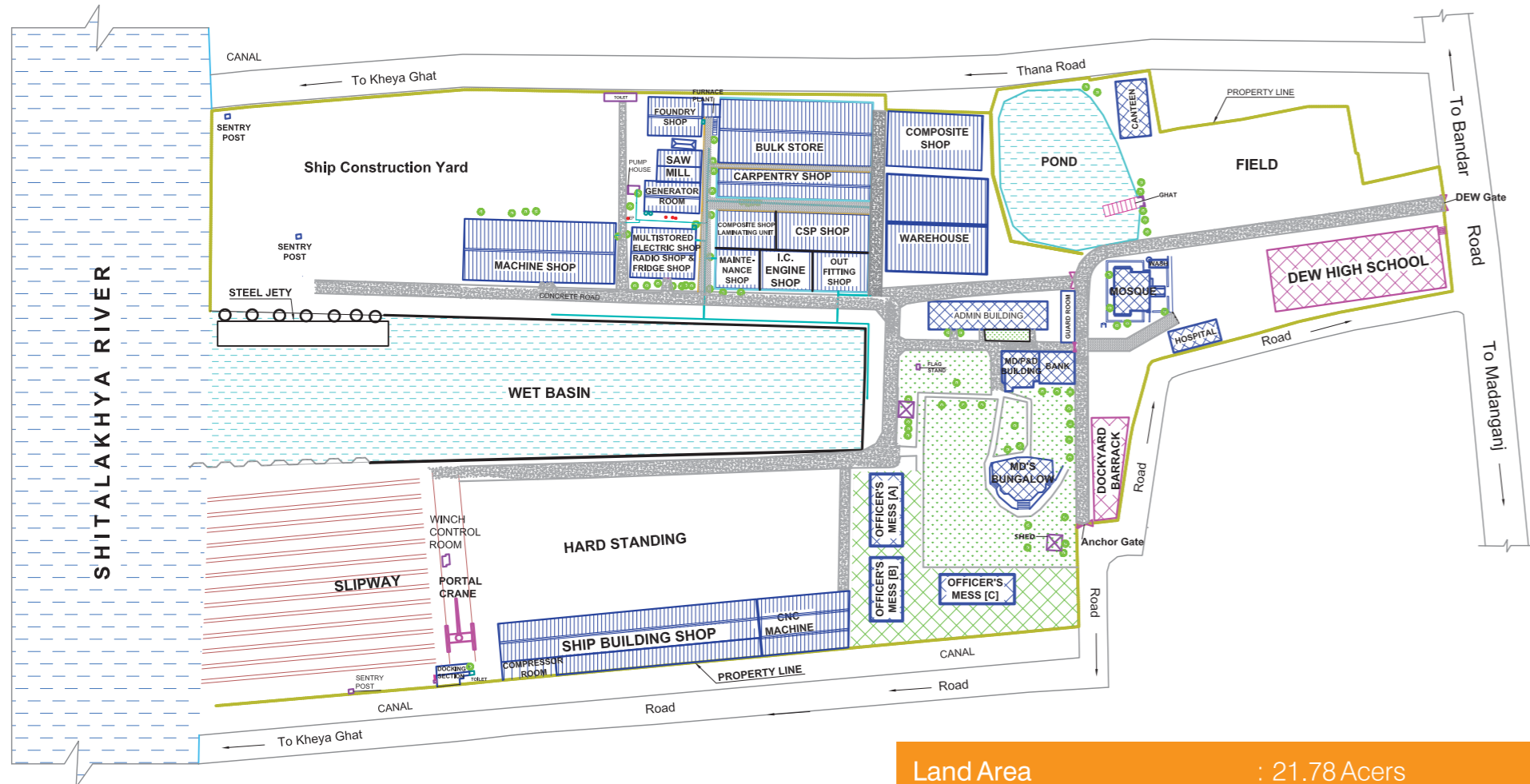


Bangladesh Shipping Corporation (BSC)

YARD'S FACILITIES



Yard Facilities and Capabilities



DEW is able to dock vessels up to 1500ton (Lightweight) of 75m (250ft) in length

Land Area	: 21.78 Acers
Slipway Size	: 88.40 m x 75 m
Basin Size	: 265m X 49m
Open Working Area	: 13,000 sqm
Old Shipbuilding Shed Area	: 3000 sqm
New Shipbuilding Shed Area	: 4200 sqm



LEGEND

- | | | |
|----------------------|---------------------|-----------------------|
| 1. MD's OFFICE | 7. OUTFITTING SHOP | 16. WARD ROOM |
| 2. ADMIN OFFICE | 8. ICE SHOP | 17. SICK BAY |
| 3. ACCOUNTS OFFICE | 9. CARPENTRY SHOP | 18. STEEL YARD |
| 4. BANK | 10. ELECTRICAL SHOP | 19. LOFTING HALL |
| 5. CENTRAL WAREHOUSE | 11. BLACKSMITH SHOP | 20. SHIPBUILDING SHOP |
| 6. COMPOSITE SHOP | 12. FOUNDRY SHOP | 21. DOCKING SECTION |
| | 13. WATER BASIN | 22. SLIP WAY |
| | 14. BUNGALOW | 23. CANTEEN |
| | 15. STAFF MESS | 24. BARRACK |



Docking Section and Slipway



Shipbuilding Shop



Machine Shop



Carpentry Shop



Outfitting Shop



Composite Shop



ICE Shop



Paint Shop



Foundry Shop



Maintenance Shop



Portal Crane 20 Ton



Forklift 5 Ton



Electrical Shop



Warehouse



Mobile Crane 100 Ton



Mobile Crane 30 Ton

OUR PRODUCTS AND SERVICES



Our Product Range

- Build and Repair ships up to 75m long and 1500tons Lightweight Tonnage
- Build Warships like Large Patrol Craft, OPV, IPV, FPB, LCT etc.
- Build auxiliary vessels like Tug, Floating Crane, Pilot vessels, Work boat etc.
- Build passenger vessel, ferry, high speed boats etc.
- Build GRP and Carbon Fiber Composite Boats etc.
- Construct various steel structures like bailey bridge, floating bridge, foot-over bridge and components of machinery.



A

We Build for Bangladesh Navy (BN)



Patrol Craft

PABNA Class Patrol Craft are the first ever warships built in Bangladesh. Total 05 (five) of these craft were built for Bangladesh Navy between timeframe of 1972 to 1977.

They were named as BNS PABNA (1972), BNS NOAKHALI (1972), BNS PATUAKHALI (1974), BNS RANGAMATI (1977), and BNS BOGRA (1977). Presently these craft are used by Bangladesh Coast Guard.

Length OA	75 ft
Breadth MLD	20 ft
Draught	05 ft
Maximum Speed	11 knot



Tug



This Harbour Tug Boat was constructed for Bangladesh Navy in the year 1993. This Tug is still in operation and providing outstanding support to the fleet.

Length OA	25.80m
Breadth MLD	7.70m
Draught	5m
Displacement	400 ton
Maximum Speed	12.5 knot
Bollard Pull	17 ton





Landing Craft Tank (LCT)

DEW constructed 02 (two) LCTs for Bangladesh Navy. These LCTs are capable of carrying 01 (one) Tank or a medium Artillery Gun or a Dozer and 32 personnel. They are used for landing Tank and Troops during wartime and for carrying relief goods for disaster management operation during peacetime.

Length OA	25.60m
Breadth MLD	5.40m
Draught	1.5m
Max Speed	10 knots
Designer	Sea Quest Technology PTE Ltd, Singapore



High Speed Boat



DEW constructed 08 (eight) High Speed Boats made of state of the art composite material technology for Bangladesh Navy. These boats are custom built to meet the operational requirements of the navy in river and at sea.

Length OA	11.70m
Breadth MLD	3.50m
Draught	0.85m
Max Speed	35 knots
Class	Bureau Veritas



**We Build for
Bangladesh Coast Guard (BCG)**

B

Inshore Patrol Vessel (IPV)



DEW constructed 04 (four) Inshore Patrol Vessels with state of the art machinery and weapons to carryout constabulary duties such as policing, patrolling, anti-smuggling, fisheries protection, Search & Rescue near shore and riverine area.

Length OA	51.40m
Breadth MLD	7m
Draught	1.96m
Max Speed	23 knots
Class	China Classification Society





Fast Patrol Boat (FPB)

DEW constructed 02 (two) Fast Patrol Boats with state of the art machinery and weapons to carryout constabulary duties such as policing, patrolling, anti-smuggling, fisheries protection, Search & Rescue near shore and riverine area.

Length OA	43.40m
Breadth MLD	6.40m
Draught	1.90m
Max Speed	25 knots
Class	China Classification Society



High Speed Boat (HSB)



DEW constructed 10 (ten) High Speed Boats made of state of the art composite material technology for Bangladesh Coast Guard. These boats are custom built to meet the operational requirements of the Coast Guard in river and at sea. It is used as interceptor to chase and apprehend boats engaged in illegal activities in coastal areas.

Length OA	11.70m
Breadth MLD	3.50m
Draught	0.85m
Max Speed	35 knots
Class	Bureau Veritas



Harbour Patrol Boat (HPB)



DEW constructed 04 (four) Harbour Patrol Boats made of Aluminium and state of the art technologies for Bangladesh Coast Guard. These boats are highly capable and have excellent maneuverability. They are custom built to meet the operational requirements of the Coast Guard in river and at sea.

Length OA	18m
Breadth MLD	5.51m
Draught	1.40m
Max Speed	25 knots
Class	Bureau Veritas



Harbour Patrol Boat (HPB)



DEW constructed 01 (one) Water Jet Propelled Harbour Patrol Boat made of Aluminium and state of the art technologies for Bangladesh Coast Guard. It's unique Water Jet Propulsion System gives it excellent maneuverability which makes it perfect choice to meet all operational requirements of the Coast Guard in river and at sea.

Length OA	20.11m
Breadth MLD	5.20m
Draught	1.10m
Max Speed	23 knots
Class	Bureau Veritas



High Speed Boat (HSB)



DEW constructed 06 (six) Water Jet Propelled High Speed Boats made of Aluminium and state of the art technologies for Bangladesh Coast Guard. It's unique Water Jet Propulsion System gives it excellent maneuverability which makes it perfect choice to meet all operational requirements of the Coast Guard in river and at sea.

Length OA	18.04m
Breadth MLD	4.635m
Draught	0.94m
Max Speed	27knots
Class	Bureau Veritas



C

We Build for Bangladesh Army

Landing Craft Tank (LCT)



DEW constructed 01 (one) LCT for Bangladesh Army. This LCT is capable of carrying 09 (nine) Tanks and 150 troops. This versatile LCT is used for landing Tank and Troops during wartime and for carrying relief goods for disaster management operation during peacetime.

Length OA	65.50m
Breadth MLD	12.20m
Depth	2.50m
Designer	GB Marine, Singapore



High Speed Boat (Aluminium)



DEW constructed 02 (two) High Speed Boats (Aluminium) for Bangladesh Army. These boats are custom built to meet the operational requirements of the Army in river routes. These boats are presently deployed to provide security to Padma Bridge.

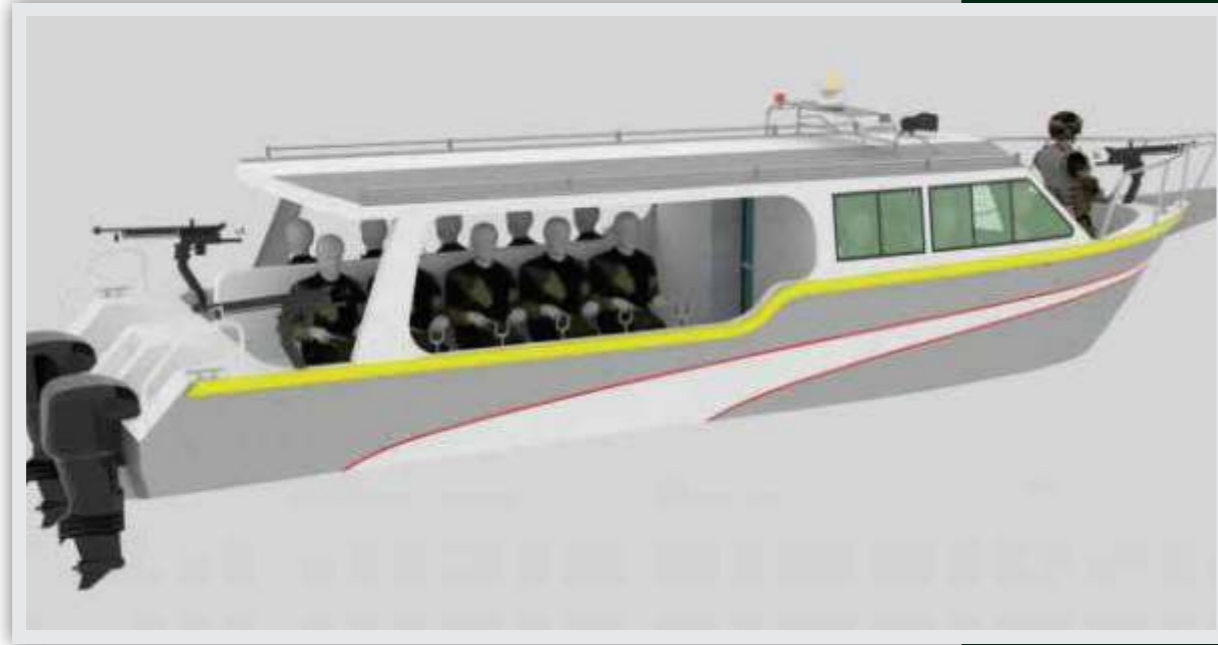


Length OA	13.50m
Breadth MLD	4m
Draught	0.95m
Max Speed	35 knots

High Speed Boat (GRP)



DEW constructed 04 (four) High Speed Boats (GRP) for Bangladesh Army. These boats are custom built to meet the operational requirements of the Army in river routes. These boats are presently deployed to provide security to Padma Bridge.



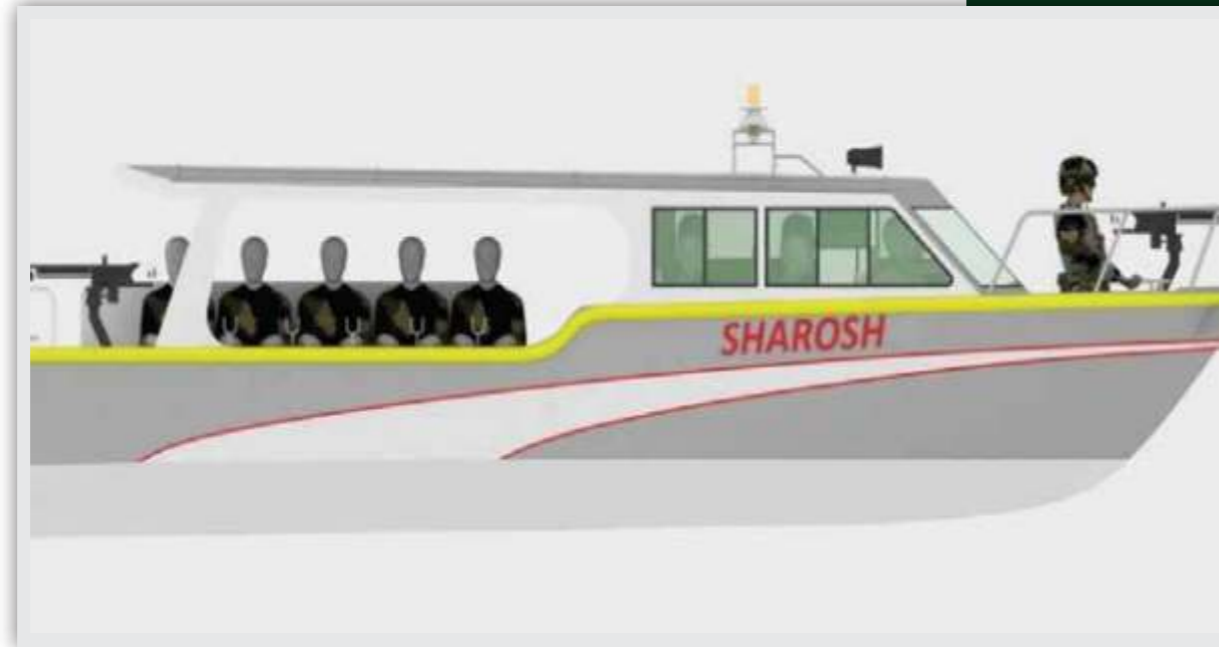
Length OA	8m
Breadth MLD	2.50m
Draught	0.60m
Max Speed	30 knots



High Speed Boat (Vessel Type-D)



DEW constructed 01 (one) High Speed Boat (Vessel Type-D) for Bangladesh Army. This boat is custom built to meet the operational requirements of the Army in river routes. This boat is used to carry troops to meet operational requirement and presently deployed to provide security to Padma Bridge.



Length OA	10m
Breadth MLD	3m
Draught	0.60m
Max Speed	30 knots



D

**We Build for
Fire Service and Civil Defence**

Fire Float



DEW constructed 01 (one) Fire Float for Bangladesh Fire Service and Civil Defence. This boat is used to carry firefighters to carry out firefighting onboard any ship/ boat under fire in river. This boat is capable of providing all kinds of firefighting support to any vessel having fire onboard.



Length OA	17m
Breadth MLD	5m
Draught	0.95m
Max Speed	20 knots

**We Build for Department of
Disaster Management**

E

Multipurpose Accessible Rescue Boat

DEW has constructed 60 (sixty) Multipurpose Accessible Rescue Boats for Bangladesh Department of Disaster Management (DDM). Already 12 (twelve) boats has been delivered. These boats are custom made for rescuing disabled persons from rural areas during flood or cyclone.

Length OA	54ft
Breadth MLD	12.50ft
Depth	3.5ft
Speed	7 knots



**We Build for
Chittagong Port Authority (CPA)**

F



Hydrographic Survey Boat

DEW constructed 01 (one) Hydrographic Survey Boat for Chittagong Port Authority (CPA). This boat is custom built with state of the art equipment to carryout survey in river and coastal area.



Length OA	14.5m
Breadth MLD	4.30m
Draught	1.3m
Max Speed	12 knots



G

We Build for Payra Port Authority

Survey Boat

DEW constructed 01 (one) Survey Boat for Payra Port Authority. This boat is custom built with state of the art equipment to carryout survey in river and coastal area.



Length OA	30.48m
Breadth MLD	7.62m
Draught	1.70m
Max Speed	15 knots



H

**We Build for Bangladesh Inland
Water Transport Authority (BIWTA)**



Tug

DEW is constructing 17 (seventeen) Tugs of different bollard pull capacities, 2 x 25 BP, 5 x 7 BP and 10 x 12 BP, for Bangladesh Inland Water Transport Authority (BIWTA). These Tugs will have state of the art machinery and equipment to fulfill the operational requirement of BIWTA.

2 x 25 BP

Length OA	28m
Breadth MLD	8.50m
Draught	2.50m
Speed	12 knots

5 x 7 BP

Length OA	15.60m
Breadth MLD	6m
Draught	1.650m
Speed	10 knots

10 x 12 BP

Length OA	28m
Breadth MLD	8.50m
Draught	1.80m
Speed	11 knots





Amphibian Dredger

DEW constructed 04 (four) Amphibian Dredgers for Bangladesh Inland Water Transport Authority (BIWTA). These dredgers are uniquely designed for operating both in water and on land.

Dredger Depth	6.5m
Cutter Diameter	200mm
Capacity	50 cubic metre/hour





House Boat

DEW constructed 02 (two) House Boats for Bangladesh Inland Water Transport Authority (BIWTA). These house boats are used as mother vessels to provide logistic support and crew accommodation in remote areas. These are self-sustained type having electric generators, solar systems, water pumps, overhead fresh water reservoir, air conditioning systems etc. to ensure comfortable stay of crew onboard.

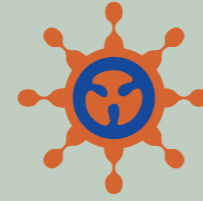
Length	18m
Breadth	7m
Draught	1.85m
Capacity	19 personnel





**We Build for Bangladesh Inland
Water Transport Corporation**

Ro-Ro Ferry



DEW constructed 02 (Two) Ro-Ro Ferry (KERAMAT ALI & ENAYETPURI) for Bangladesh Inland Water Transport Corporation (BIWTC). Presently these Ferries operate in Paturia-Daulatdia route in the Padma river.

Length OA	60m
Breadth MLD	12.19m
Depth	2.90m
Passenger Capacity	335 persons
Vehicle Capacity	27 trucks of 12 ton



J

We Build for Private Owners

Cutter Suction Dredger

DEW constructed 02 (two) Cutter Suction Dredgers for SS Rahman International. It has 18 inch cutter which make them suitable for dredging sand, silt, clay, and even rock from river bed.



Catamaran GRP Boat

DEW constructed 01 (one) Catamaran GRP Boat for North West Power Generation Co. Ltd. It is a luxurious cruise boat with state of the art facilities for the entertainment of the passengers.

Length OA	19m
Breadth MLD	8m
Depth	2.5m
Max Speed	30 knots



VIP Boat

DEW constructed 02 (two) bullet proof Aluminium VIP carrying boats for Bangabandhu Sheikh Mujibur Rahman Tunnel (Karnaphuli Tunnel) Project to provide security to the tunnel as well as for carrying VIP guests.

Length OA	14.30m
Breadth MLD	4m
Draught	0.70m
Max Speed	30 knots
Class	Indian Register of Shipping



K

We Provide Landing Solutions

Pontoon / Barge

DEW has wide experience of constructing pontoons, both general and self-sustained type, for large number of customers. Till date DEW constructed 69 (sixty nine) pontoons for her valued customers. DEW also constructed catamaran type pontoons for special use.



Landing Solutions

DEW is highly capable of providing complete solutions to your landing problem near river or sea shore. Besides pontoons/barges, DEW constructs Causeways, Bailey Bridges, and Shore Bollards. For best performance it is suggested that Causeway, Bailey Bridge and Shore Bollard should be constructed together with pontoons/barges.





Engineering Solutions



Location: Hi-Tech Park, Sylhet



Location: Cox's Bazar Airport



Location: Payra Port, Patuakhali



Location: Rajuk Purbachal, Dhaka



Location: Bellman Hangar, Chattogram



Location: Near Hotel Sonargaon

Engineering Solutions

DEW is highly capable of providing complete solutions to your engineering problems. DEW constructs Foot-over Bridges, civil infrastructures, components of machinery and carries out dredging works, besides construction of Causeways, Bailey Bridges and Shore Bollards. Major civil infrastructure development projects have undertaken by DEW are Bangabandhu Sheikh Mujib Hi-Tech Park Sylhet, Infrastructure Development Payra Port, Purbachal New Town Project Dhaka, Naval Aviation Hangar Chattogram, Development of Cox's Bazar Airport (Phase-I). DEW can be your trusted partner in this regard.



HI-TECH PARK, SYLHET PROJECT



HI-TECH PARK, SYLHET
PROJECT



PAYRA PORT, PATUAKHALI
PROJECT



BELLMAN HANGAR, CHATTOGRAM PROJECT



DEVELOPMENT OF COX'S BAZAR AIRPORT (PHASE-I) PROJECT

M

**We Provide solutions for
Ship Maintenance and Conversion**

DEW provides complete maintenance support to your maritime assets. Our cost effective and quality services will definitely satisfy you.

Docking & Undocking

DEW has dedicated slipway for Docking & Undocking ships & craft. Size of the slipway is 88.4m X 75m where ships having max length of 75m and lightweight of 1500tons can docked.

Emergency Support

Our emergency maintenance support team is always ready and only a call away to provide maintenance support anywhere within Bangladesh.



Our Achievements & Recognitions

Our Achievements & Recognitions



DEW has been awarded many times for its noticeable deeds. One of these mentionable awards is, winning the Best Corporate Award in 2014 and 2015, in special category, presented by ICMAB. Later on, DEW again won the Best Corporate Award in miscellaneous services category, presented by ICMAB, in the year 2017. As a part of marketing strategy DEW is participating in different marine EXPOs and events such as BIMRAD-2018, BIMOX-2019, etc. In 2021 ICMAB awarded DEW the Best Corporate Award 2020.

Paper News



Goodwill Visits, Exhibitions & Awards



Goodwill Visits, Exhibitions & Awards



Goodwill Visits, Exhibitions & Awards

Goodwill Visits, Exhibitions & Awards



We are waiting for

your call.

96
Years
Legacy

Office:
Dockyard and Engineering Works Limited
Bangladesh Navy
Sonakanda, Bandar, Narayanganj
Bangladesh

General Manager (P&D): +8801769719810
DPM Project Officer: +8801769719814
Commercial Officer (Procurement): +8801769719887
Fax Number: +88 02223303501
Email: contact@dewbn.gov.bd
Website: <http://www.dewbn.gov.bd>

Your Oldest Trusted Shipbuilding Partner

96 Years
Legacy

<http://www.dewbn.gov.bd>